

Purchase Order # \_\_\_\_\_  
 Dealer Name \_\_\_\_\_  
 Store Number \_\_\_\_\_  
 City & State \_\_\_\_\_  
 Ordered by \_\_\_\_\_  
 Customer Name / Phone \_\_\_\_\_

QUOTE ONLY?

Yes  No



**Natural Granite (Stone) Vanity Tops**

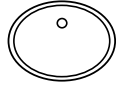
Effective July, 2017

Vanity Top Size: Length: \_\_\_\_\_ Depth: \_\_\_\_\_

Color Name: \_\_\_\_\_

**STANDARD GRANITE:**

- 2cm Thickness (0.787 inches)
- 22" Depth
- Centered, Undermount Oval Bowl
- Includes Eased Edge, front & bowl cutout
- Sides are eased and finished



Eased Edge (Standard on Front Edge and Bowl Edge)

**FAUCET DRILL:** (4" Centerset Default)

Single  8"  None

Extra Faucet Drill

(provide location dimensions)

**BOWL COLOR:**

White  Bisque

**SPLASHES:**

4" Loose Backsplash (included)

No Backsplash

Left Side Splash

Right Side Splash

LENGTH	LEVEL A	LEVEL B	LEVEL C
25"			
31"			
37"			
43"			
49"			
55"			
61"			
61" dbl Bowl*			
73" dbl Bowl*			

<b>Base Price:</b>
\$
<b>Side Splash:</b>
\$
<b>Caulk/Gel Gloss:</b>
\$
<b>TOTAL:</b>
\$

\*61" DBL BOWL CENTERS are 15 1/2" from each end.

\*73" DBL BOWL CENTERS are 18 1/2" from each end.

**CUSTOM GRANITE:**

- 2cm Thickness (0.787 inches)
- Default Depth = 22"
- Other depths up to 26" (add 25%)
- \*Finished product has an industry tolerance of ±1/4"
- Includes Eased Edge, front & bowl cutout



Eased Edge is the default Front Edge and Bowl Edge

**FAUCET DRILL:** (4" Centerset Default)

Single  8"  None

Extra Faucet Drill

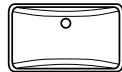
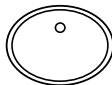
(provide location dimensions)

**BOWL STYLES:**

Oval (No Charge)

Kohler 2210 Oval

(additional charge/bowl)



Rectangular Bowl (additional charge / bowl Eased Edge Bowl Only)

**SPLASHES:**

4" Loose Backsplash (included) (Custom height splashes - call for quote)

No Backsplash

Left Side Splash

Right Side Splash

LENGTH	LEVEL A	LEVEL B	LEVEL C
up to 25"			
up to 31"			
up to 37"			
up to 43"			
up to 49"			
up to 55"			
up to 61"			
up to 73"			
up to 85"			
up to 97"			

<b>Base Price:</b>
\$
<b>Custom Dept: Add 25%</b>
\$
<b>Bowl Styles:</b>
\$
<b>Add'l Bowl:</b>
\$
<b>Cut Out:</b>
\$
<b>Side Splash:</b>
\$
<b>Flatstock:</b>
\$
<b>Profile:</b>
\$
<b>Custom Plus:</b>
\$
<b>Caulk/Gel Gloss:</b>
\$
<b>TOTAL</b>
\$

**BOWL COLOR:**

White  Bisque  White  Bisque

**KOHLER BOWL COLOR:**

**CUT OUTS:** (Template Required)

Drop-in or Undermount

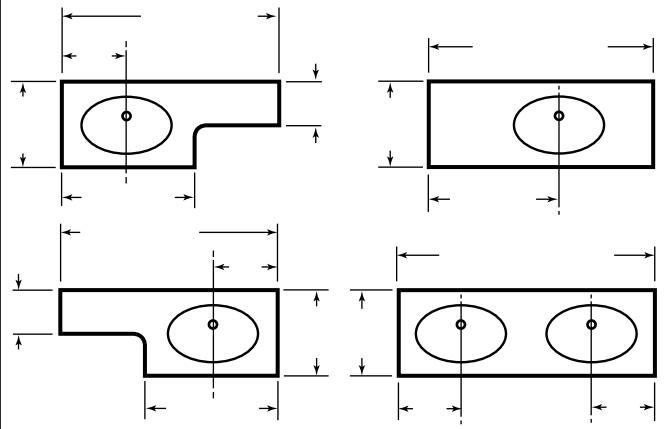
Vessel

**ADDITIONAL BOWL:**

Additional charge per bowl, + upcharge for bowl style

**BOWL OR CUT OUT LOCATION:**

Indicate the applicable dimensions in the spaces below:



Color-Coordinated Caulk _____ QTY: _____
"Mist" Installation Tool for Caulk _____ QTY: _____
Gell Gloss Nat. Stone Care/ Cleansing Kit _____ QTY: _____
Care/Cleaning Kits Contains: 1 Counter Gloss Granite - 24 oz bottle 1 Faucet Brite - 8 oz bottle 1 Glass Wax Cleaner - 8 oz bottle
Counter Gloss Granite 24 oz _____ QTY: _____

**DESIGNER EDGES:**

Mark the appropriate box in the table.

Apply the cost as follows:

= No Add'l Charge

= Charges Apply

	Eased Edge	Ogee Edge	Half Bullnose	Beveled Edge
<b>Bowl</b>				
<b>Left</b>				
<b>Front</b>				
<b>Right</b>				

**CUSTOM PLUS DESIGN CHANGES:** (see back)

Custom Shape #5 or #9

Custom Shape #6 or #10

Left or

Right Radius

Angle or

Notch

Left Banjo or

Right Banjo

(Include drawing/sec sheet with your fax)

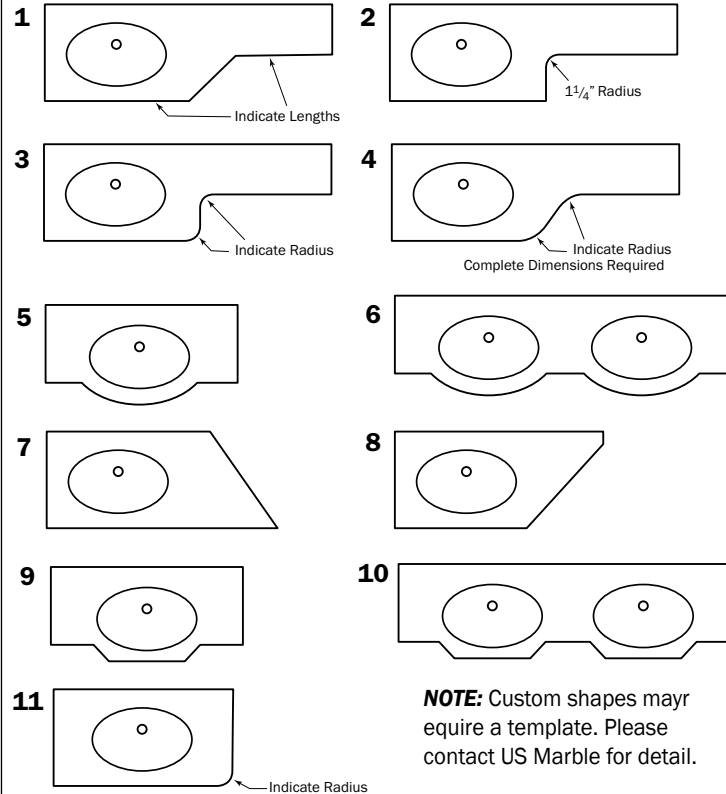
**COLOR SELECTIONS:**

GRANITE PRICING LEVEL A:	
Color:	Number:
Butterfly Blue	900205
Crema Pearl	900220
Golden Beach	900207
Verde Butterfly	900219

GRANIT PRICING LEVEL B:	
Color:	Number:
Blue Pearl	900204
Gray Latte	900208
Santa Cecilia	900212
Santa Cecilia Light	900215
Uba Tuba	900214

GRANIT PRICING LEVEL C:	
Color:	Number:
Black Galaxy	900216
Giallo Ornamentale	900217
Giallo Veneziano	900206
New Veneziano	900218

**CUSTOM SHAPES**



**CUSTOM PLUS DESIGN:**

- 1 - Inside Angle Cutback
- 2 - Inside Radius Cutback
- 3 - Inside & Outside Radius 90° Cutback
- 4 - Inside & Outside Radius Angle Cutback
- 5 - Curved Front
- 6 - Double Curved Front
- 7 - Angle Back-to-Front
- 8 - Angle Front-to-Back
- 9 - Special 2-Angle Front
- 10 - Double 2-Angle Front
- 11 - Front Radius Corner

**NOTE:** Custom shapes may require a template. Please contact US Marble for detail.

**CUSTOM PLUS DESIGN OPTIONS**

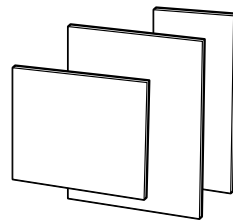
5, 6, 9 & 10 REQUIRE cabinet layout with order

**FLATSTOCK**

Pricing for Flatstock per square foot with one long "Eased Edge" finished

**Maximum size:** 26" x 97"

**Minimum size:** 4" x 24"



**Optional Custom Edge Profile available** (See Edge Profiles under Options)

Pricing is per Lineal Foot added to price of Flatstock.

Add lengths of all edges to be finished with custom edge profile, (Total inches divided by 12 provides "Lineal Feet").